

How to Swap ADEPT(Piezo Drive cards) in a TG-1000 Controller

This tech note contains instruction on how to remove an ADEPT(Piezo Drive) card from a Tiger Controller(TG-1000) and replace it with another.

Tools Need

- A Medium Phillips(Star) screwdriver
- A Small Flat screw driver
- A Pair of small wire cutter

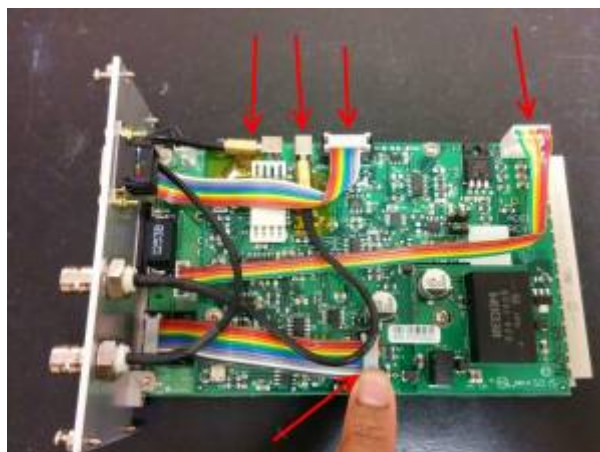
Accessing Tiger Mother Card from TG1000 controller



The ADEPT(Piezo Drive card) comes paired with a Tiger Mother card. This card can be removed from the TG-1000 controller by unscrewing the 4 Faceplate Screws with a Flat screw driver.

Then Pull the entire card out to continue the repair

Disconnect the Connectors

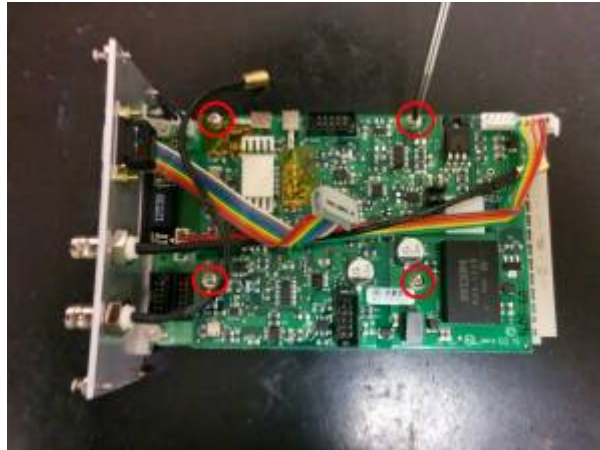


The ADEPT card , is connect to the Tiger Mother connector with 5 connectors.

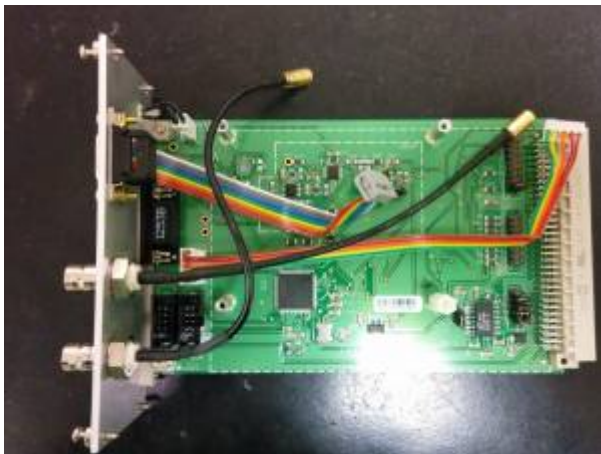
- There are two SMB connectors
- Two 10-pin Header connector, and
- 5-pin Molex connector

Unscrew the mounting screws

Then Unscrew the four 4-40 mounting screws with a Phillips(Star) screwdriver.



Now the ADEPT Card can be removed from the Tiger Mother card.

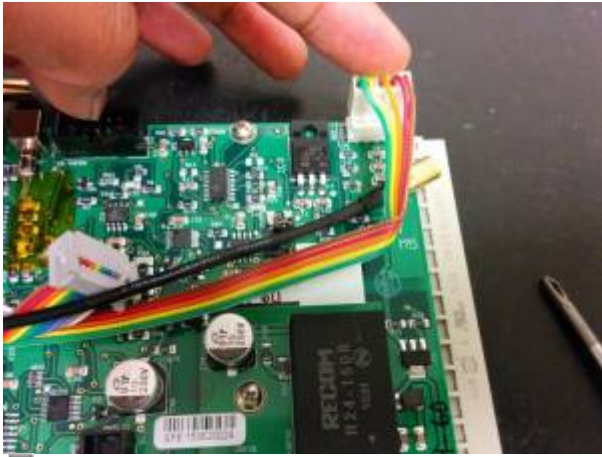


Bare Tiger Mother card

ReAssembly

Put the replacement ADEPT card on the four stand-off. And screw the four 4-40 mounting screws again.

Reconnect all the 5 connectors.



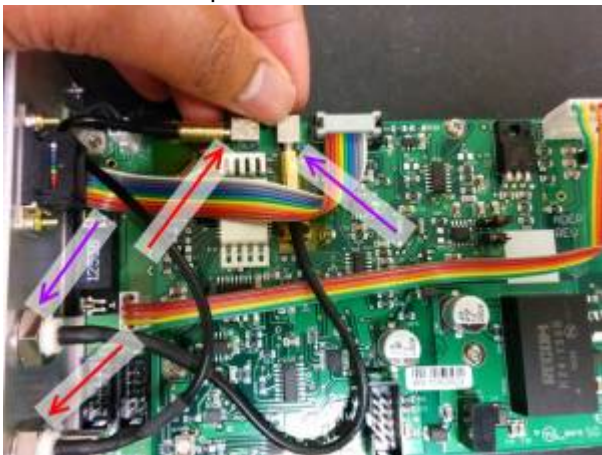
5-Pin Molex connector



The First 10-pin Header connector



The Second 10-pin Header connector



And the Two SMB connectors

In the Picture , the low BNC connector, connects to the Left SMB connector (shown with RED arrows)
the Upper BNC connector , connects to the Right SMB connector (shown with PURPLE arrows)

Slide the Tiger-Mother card back into the Tiger Controller, and then you are done!



If you have any problems removing or installing the Adept Piezo Daughter Boards contact a ASI technician for further instructions on the procedure so that you don't get frustrated and the system doesn't get damaged.

[piezo](#), [tech note](#), [tiger](#), [ADEPT](#)

From:
<http://asiimaging.com/docs/> - **Applied Scientific Instrumentation**

Permanent link:
http://asiimaging.com/docs/adept_swap_in_tg1000

Last update: **2019/04/18 23:33**

