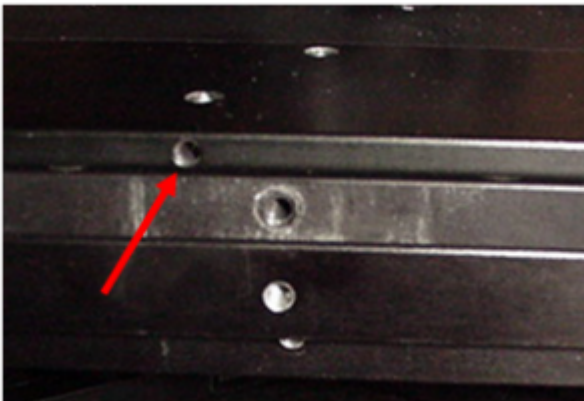


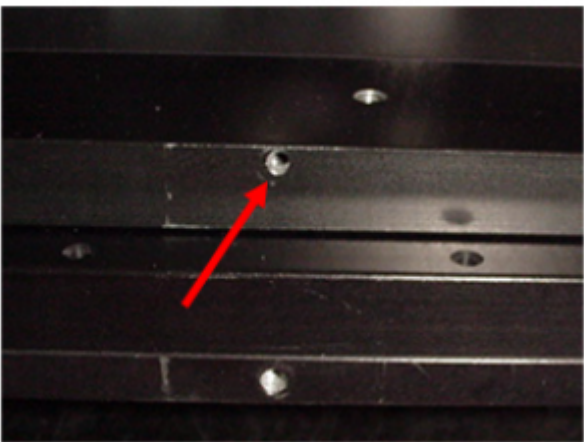
Installing the Insert in the ASI MS-8000 Stage

Attention should be given to the secure installation of the insert into an MS-8000 stage to prevent its movement during operation. Any accidental shifting of the insert during movement will adversely affect the stage's repeatability properties.

Two setscrews in the side of the top plate hold the insert in place. A 0.050" Allen wrench is provided to secure the setscrews.



Insert's setscrew access on right side of stage.



Insert's setscrew access on rear of stage.

[xystage](#), [common](#), [ms8000](#)

From:

<http://asiimaging.com/docs/> - **Applied Scientific Instrumentation**

Permanent link:

http://asiimaging.com/docs/ms8k_insert

Last update: **2019/04/18 23:34**

